

# THE HAMPTON

A true classic with all the appointments associated with the charm of a European country house, this home features impressive steeply pitched roof lines and a formal masonry entry porch that face a motor courtyard and a conveniently located carriage style garage.

The entrance porch with gracious arched masonry openings and a finely detailed entry door lead into a formal entry hall that opens to the great room with a grand fireplace and large windows.

Openness, natural light, and 10 foot ceilings are the defining characteristics of each living space on

the main level. The kitchen features wrap around cabinets, a pass through to the great room, a large central island, a cozy sitting area, fireplace and breakfast room. A walk onto the wrap around covered terrace will reveal a comfortable area for gathering with friends and family and steps down onto one of "The Coves" signature private courtyards.

A wet bar and walk-in pantry serve as a convenient transition from the kitchen to the spacious dining room with a grand window. Entering through a private alcove the master suite

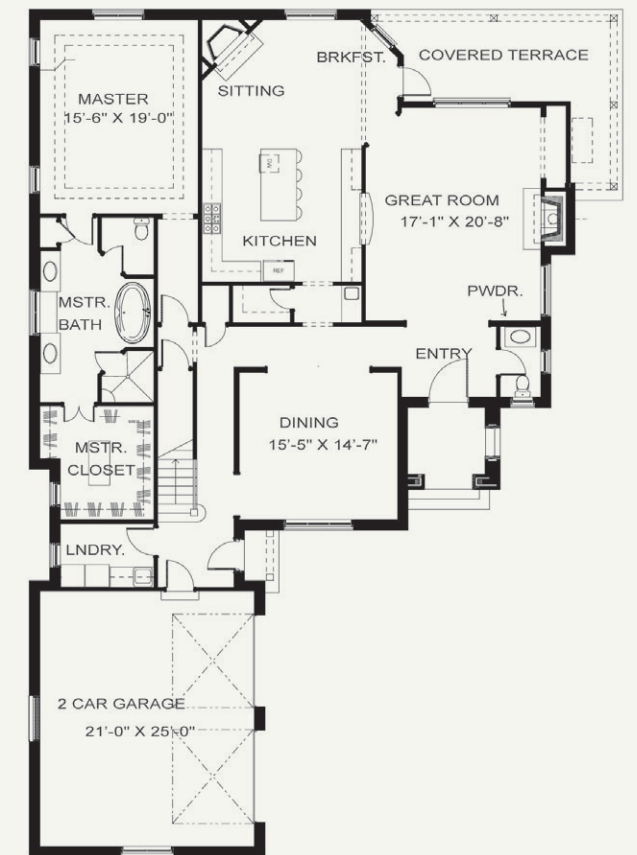
features decorative ceilings, spacious bathroom with walk-in shower and master closet with dressing island.

Upstairs provides a large study and two individual bedroom suites each with a walk-in closet and bathroom suite. Nine foot ceilings complimented by dormers, unique ceiling angles, and decorative windows give these spaces an abundance of character and charm. Ample walk-in storage and an optional bonus room are available.

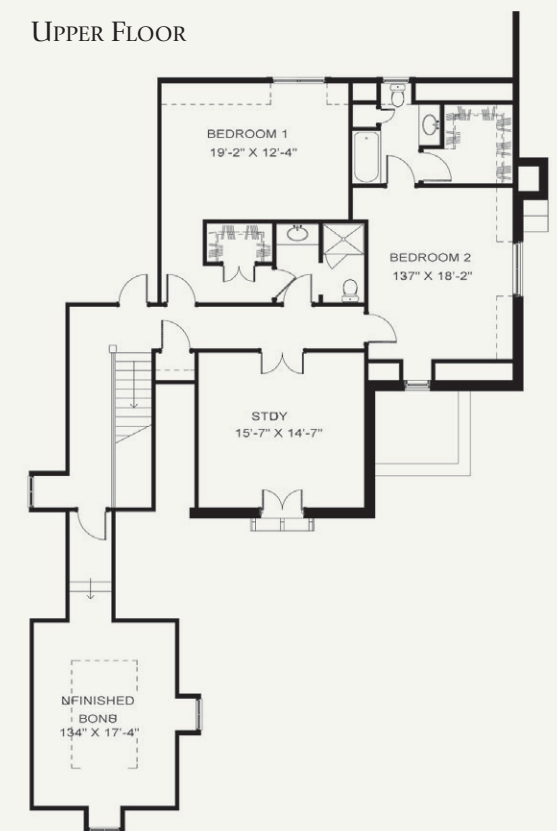
*The Hampton has approximately 3,500 square feet for the combined main and upper levels. Final square footage depends on options selected by owner.*



MAIN FLOOR



UPPER FLOOR



**THE COVE**  
AT TURKEY CREEK

*The Cove uses pictures, elevations, and floor plans for illustrative purposes only. Information found herein is subject to change throughout the duration of the development. The Cove's working construction drawings take precedent in guiding the construction of each home. Prices and specifications are subject to change without notice. Copyright © All rights reserved Jonathan Miller Architects; Knoxville, Tennessee; 3/15/06*