

THE LIVINGSTON

The European exterior hints at the detail and elegance that this home has to offer. Upon arrival through the covered entry the spaciousness of the main level is immediately apparent. The foyer opens to a charming study and bedroom on each side.

This home boasts ten foot ceilings and features multiple oversized archways that compliment the abundance of extra open space. Beyond the stair hall and dining room is a sophisticated kitchen

enhanced by an informal dining area. The kitchen with its massive island opens to the great room that features an inviting fireplace.

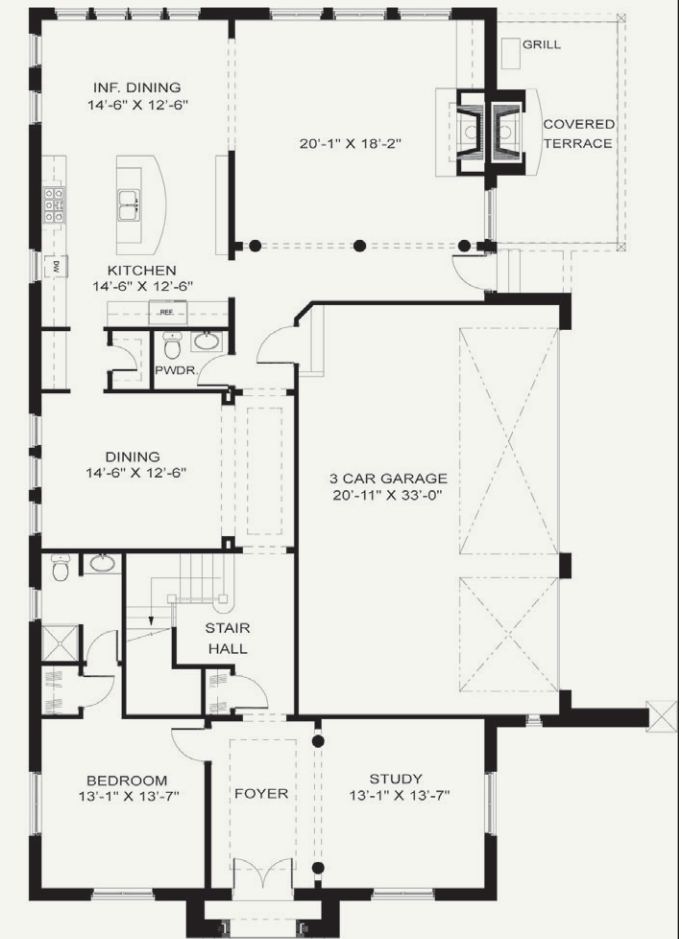
A dramatic aspect of the home is the outdoor living space with a covered terrace and outdoor fireplace that is accessible from the great room. This space offers a great stage for outdoor gatherings and entertainment. A three car garage is featured within "The Cove's" signature motor court.

At the core of the home, a gracious winding staircase opens to the upper level. The upstairs has a master suite with a large walk-in closet and luxurious master bath. An entertainment room and two individual bedrooms complete the upper level. Nine foot ceilings, complimented by dormers and decorative windows, give these spaces an abundance of character and charm.

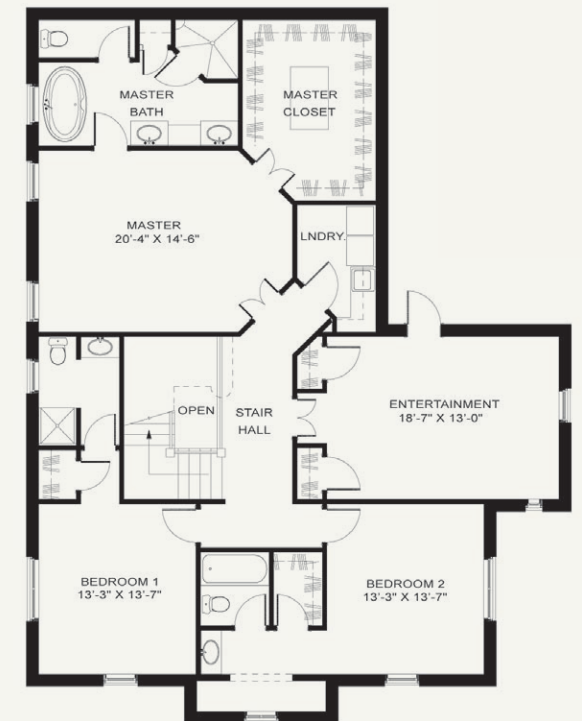


The Livingston has approximately 3,700 square feet for the combined main and upper levels. Final square footage depends on options selected by owner.

MAIN FLOOR:



UPPER FLOOR



Upper Floor

THE COVE
AT TURKEY CREEK

The Cove uses pictures, elevations, and floor plans for illustrative purposes only. Information found herein is subject to change throughout the duration of the development. The Cove's working construction drawings take precedent in guiding the construction of each home. Prices and specifications are subject to change without notice. Copyright © All rights reserved Jonathan Miller Architects; Knoxville, Tennessee; 3/15/06