

THE TOWNSEND

Charm and old world style abound in this traditional single level home. A combination of brick stone, crafted shutters and elegant roof lines on this cottagesque home will provide a wonderful backdrop for the spacious living found inside. Upon entrance from the masonry entry porch guests will be surprised by the spacious 2 story grand stair hall that leads up to the entertainment level. Views of the enclosed garden courtyard can quickly be seen through the grand window in the spacious dining room. This courtyard, located in the center of the

house, brings natural light into the main living spaces and could contain a fountain or an outside fireplace; a wonderful environment for entertaining family and friends.

A massive eat-in island is the heart of the Kitchen that opens up to a Great Room with an impressive fireplace, built-in entertainment center, and vaulted ceiling with soaring timbers. A family entrance enters the kitchen area from the garage providing convenient entry to the main living spaces from the side motor court parking area. Entering through a private alcove the Master Suite is designed

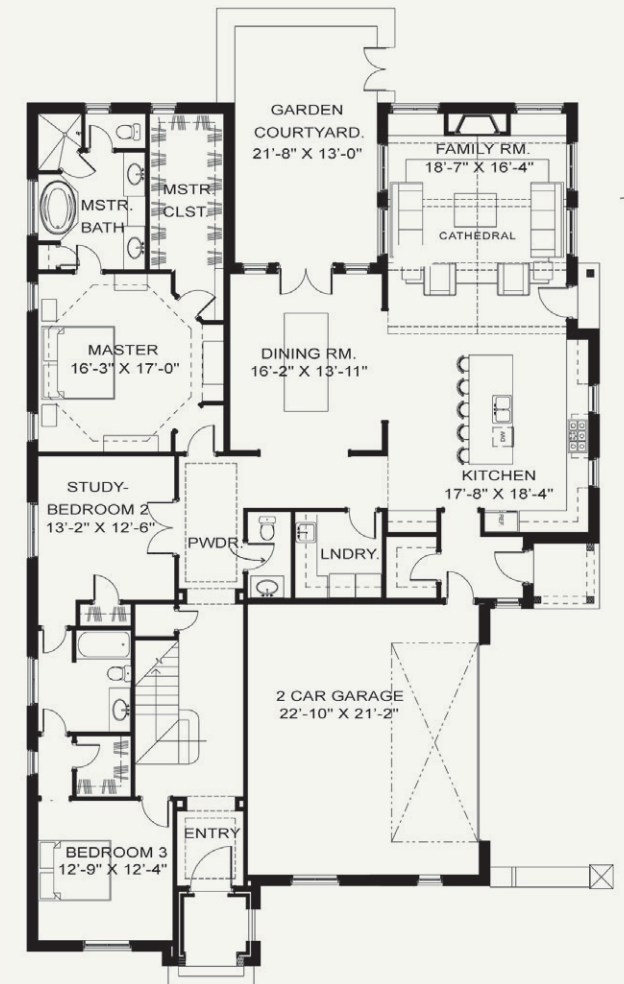
around a classic arrangement of furniture, featuring an elegant octagonal tray ceiling and a large bathroom suite with a walk-in closet. The Study is conveniently located next to the master suite and main living area and could double as a guest room if desired, as it shares the bathroom with the third bedroom located at the front of the house.

Upstairs provides a dramatic colonnade looking down to the entry hall below, walk-in storage facilities, an entertainment room and an optional bedroom with bathroom and closet.

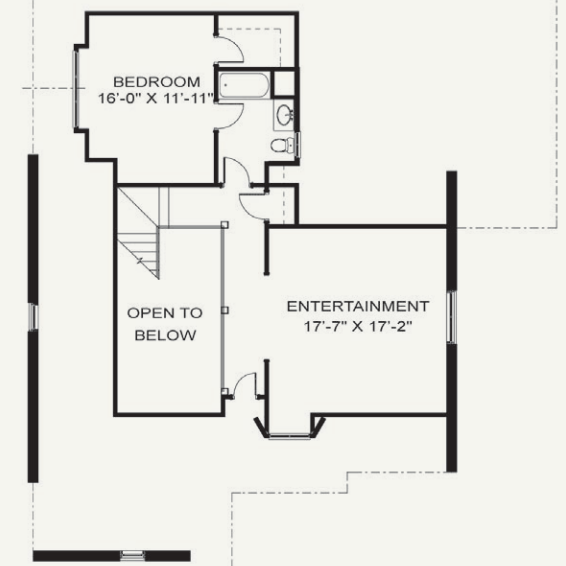
The Townsend has approximately 3,100 square feet for the combined main and upper levels. Final square footage depends on options selected by owner.



MAIN FLOOR:



UPPER FLOOR



THE COVE
AT TURKEY CREEK

The Cove uses pictures, elevations, and floor plans for illustrative purposes only. Information found herein is subject to change throughout the duration of the development. The Cove's working construction drawings take precedent in guiding the construction of each home. Prices and specifications are subject to change without notice. Copyright © All rights reserved Jonathan Miller Architects; Knoxville, Tennessee; 3/15/06